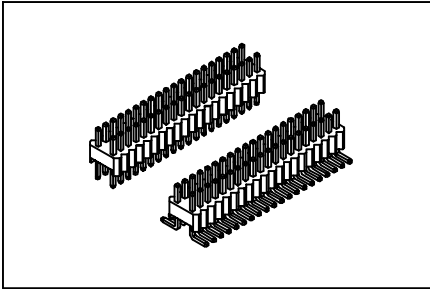


# Pin Header 1.27mmX2.54mm(0.050"X0.100")

# GXCON



### Features:

- \* Choice of through-hole and surface mount.
- \* Very low profile 2.54mm(0.10").
- \* Custom design offered.

### Material:

**Housing:** High temperature housing withstands IR and VPR soldering methods.

**Contacts:** Brass.

**Plating:** Gold plated over nickel.

Tin plated over nickel.

Selective gold plated: Gold plated on mating area and tin plated on solder tail.

### Electrical Characteristics:

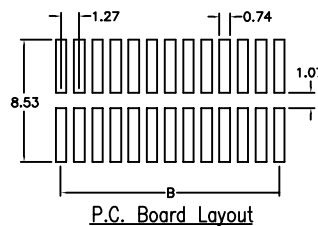
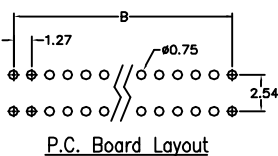
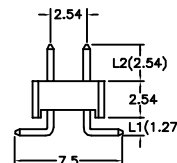
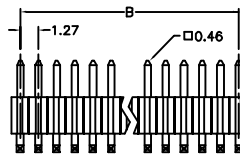
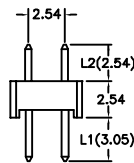
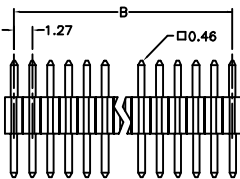
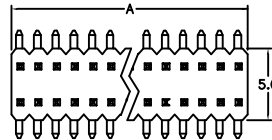
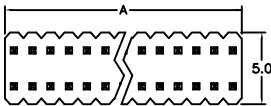
**Current Rating:** 1 AMP.

**Insulator Resistance:** 5000MΩmin. at DC 500V.

**Contact Resistance:** 20mΩmax. at DC 100mA.

**Operating Temperature:** -65°C ~ +125°C.

**Max Processing Temperature:** 230°C for 30~60 seconds.



Position	4 Thru 100
Dimension	
A	1.27 X No. of Positions /2
B	1.27 X No. of Positions /2-1.27

### Ordering information

PH22- 2	50	1	1 /L1 /L2
Series Double Row	No. of Pin Per Row	3: Selective Gold Plated 1: Gold Plated 2: Tin Plated	1: Straight 3: Surface Mount

Custom Design: Straight (i.e. PH22-25011/L1 /L2)  
Surface mount (i.e. PH22-24013/L1/L2)